



RIMT
UNIVERSITY

NAAC
Accredited

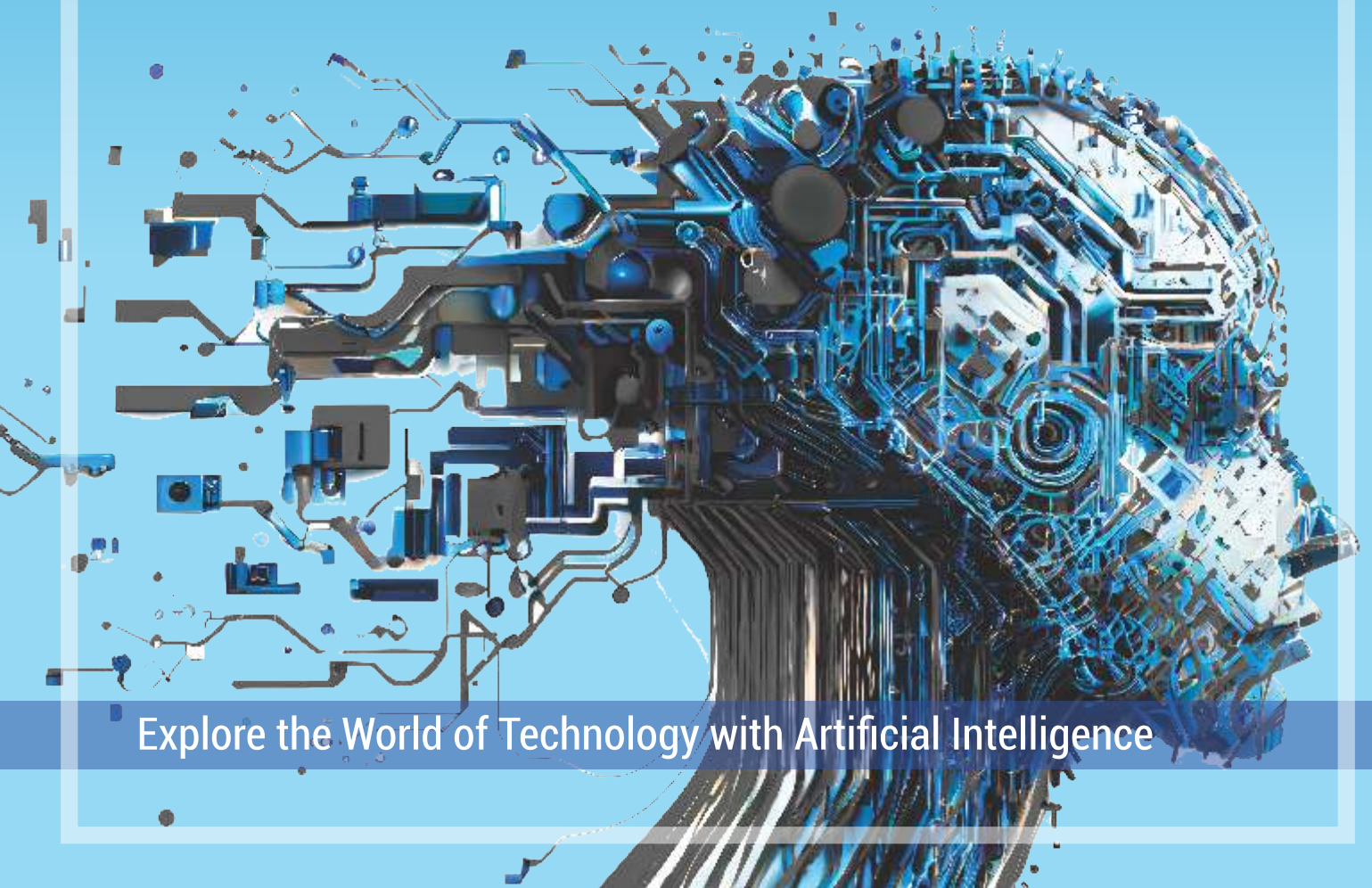
in Collaboration
with



ENGINEERING

Shape the Future with

ARTIFICIAL INTELLIGENCE | CYBER SECURITY
MACHINE LEARNING | INTERNET OF THINGS
DATA SCIENCE | 3D PRINTING



Explore the World of Technology with Artificial Intelligence



Why Choose

ARTIFICIAL INTELLIGENCE

at RIMT University

Cutting-Edge Curriculum:

Our B.Tech CSE (AI) program is designed to provide a strong foundation in core computer science subjects while focusing on advanced topics in Artificial Intelligence, including machine learning, natural language processing, computer vision, and robotics.

Industry-Ready Skills:

Gain hands-on experience through industry collaborations, live projects, and internships that prepare you for real-world challenges.

World-Class Faculty:

Learn from highly qualified professors and industry experts who bring rich experience and expertise to the classroom.

Career Opportunities:

- AI Engineer
- Machine Learning Specialist
- Data Scientist
- Robotics Programmer
- AI Researcher
- Software Developer with AI expertise

Placement Opportunities:

Be part of RIMT University's stellar placement track record with top recruiters in the tech industry, such as Google, Microsoft, TCS, Infosys, and more.

AI-Focused Specializations:

Choose elective subjects to deepen your knowledge in areas like deep learning, autonomous systems, and AI ethics.

State-of-the-Art Facilities:

Access advanced labs equipped with the latest technology, including AI-enabled hardware, cloud computing platforms, and high-performance computing clusters.

Key Benefits:

Project-Based Learning: Work on AI projects such as chatbots, predictive models, and image recognition systems.

Hackathons & Competitions: Participate in AI hackathons and coding challenges to showcase your skills.

Global Exposure: Engage with guest lectures and workshops by AI experts from around the world.

Start-Up Incubation: Support for entrepreneurial students to develop AI-based startups through our innovation center.



Program Highlights

B.TECH. CSE
(Hons.)
AI & ML

B.TECH. CSE
IoT & Cyber Security
Including Block Chain
Technology

B.TECH. ME
with minor in
AI & ML

B.TECH.
AI & ML
in collaboration with SAS
(3 International Certification)

B.TECH. ECE
(Hons.)
AI & ML

B.TECH. EE
with minor in
AI & ML

B.TECH. CE
with minor in
AI & ML

BCA
with specialization in
AI & DS

BCA
with specialization in
AI & ML

B.TECH.
Computer Science
and Engineering

B.TECH.
CSE (Hons)
CYBER SECURITY

B.TECH. CSE
in specialization in
FULL STACK DEVELOPMENT

B.TECH.
CSE (Hons)
DATA SCIENCE

B.TECH.
CSE (Hons)
INTERNET OF THINGS

B.TECH.
Mechanical
Engineering

B.TECH.
ME (Hons)
3D PRINTING

B.TECH.
Electronics &
Communication
Engineering

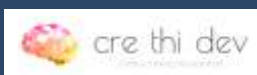
B.TECH.
ECE (Hons)
INTERNET OF THINGS

B.TECH.
Electrical
Engineering

B.TECH.
Civil Engineering

B.TECH.
Civil Engineering (Hons)
3D PRINTING

National & International TIE UPS



Enroll Now to Lead the AI Revolution!

PLACEMENT & CORPORATE READINESS CELL (PCRC)

- Highest Package: Rs. 40 LPA
- Internships & Training Partners: Collaborations with leading companies like Red Hat, HP, etc.
- Workshops & Training: Soft skills, aptitude, technical training & personality development.
- Career Guidance: Individual career mapping and expert counseling.
- Industry Connect: Guest lectures, mentorship and corporate visits.
- Placement Programs: CRTP, EEP and CGW for placement readiness.



FINANCIAL AID & SCHOLARSHIPS

MERIT-BASED SCHOLARSHIPS:

Offer scholarships based on academic performance, JEE scores, or extracurricular achievements.

EARLY BIRD SCHOLARSHIPS:

Provide fee waivers for students who confirm admission within a specific timeline.

FLEXIBLE PAYMENT PLANS:

Allow students to pay fees in installments to reduce financial barriers.

UPTO **100%**
SCHOLARSHIP



RIMT UNIVERSITY

NH 1 Delhi-Jalandhar Highway
Sirhind Side, Mandi Gobindgarh
Punjab-147301, INDIA

✉ admission@rimt.ac.in

📘 facebook.com/rimt.ac.in

☎ **9781297547**

Visit us at:



rimt.ac.in

1800 137 0022