



RIMT
UNIVERSITY



Experience the World with Emerging Technologies

**ARTIFICIAL INTELLIGENCE | DATA SCIENCE
CYBER SECURITY | ROBOTICS & AUTOMATION
UBIQUITOUS COMPUTING | BLOCKCHAIN**



**SCAN QR CODE
TO APPLY**

Why Choose

ARTIFICIAL INTELLIGENCE at RIMT University

AI

Cutting-Edge Curriculum:

Our B.Tech CSE (AI) program is designed to provide a strong foundation in core computer science subjects while focusing on advanced topics in Artificial Intelligence, including machine learning, natural language processing, computer vision, and robotics.

World-Class Faculty:

Learn from highly qualified professors and industry experts who bring rich experience and expertise to the classroom.

AI-Focused Specializations:

Choose elective subjects to deepen your knowledge in areas like deep learning, autonomous systems, and AI ethics.

Industry-Ready Skills:

Gain hands-on experience through industry collaborations, live projects, and internships that prepare you for real-world challenges.

Placement Opportunities:

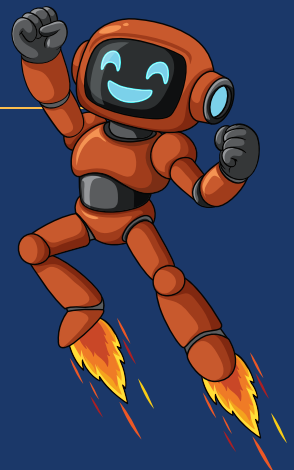
Be part of RIMT University's stellar placement track record with top recruiters in the tech industry, such as Google, Microsoft, TCS, Infosys, and more.

State-of-the-Art Facilities:

Access advanced labs equipped with the latest technology, including AI-enabled hardware, cloud computing platforms, and high-performance computing clusters.

Career Opportunities:

- | AI Engineer
- | Machine Learning Specialist
- | Data Scientist
- | Cloud Architect
- | DevOps Engineer
- | Cyber Security Specialist
- | Robotics Expert
- | AR/VR Specialist
- | Software Developer with AI expertise
- | Game Developer
- | Blockchain Developer





Key Benefits

Project Based Experiential Learning:

Work on AI projects such as chatbots, predictive models, and image recognition systems.

Global Exposure:

Engage with guest lectures and workshops by AI experts from around the world.

Hackathons & Project Expo:

Participate in AI hackathons and coding challenges to showcase your skills.

Start-Up Incubation & Innovation:

Support for entrepreneurial students to develop AI-based startups through our Desinno Innovation Center

Program Highlights

Mechanical Engineering

B.Tech Mechanical Engineering
B.Tech Mechanical Engg. + Minor in AI & ML

Lateral Entry Options:

- B.Tech Mechanical Engineering – Lateral Entry
- B.Tech Mechanical Engg. + Minor in AI & ML – Lateral Entry

Electronics & Communication Engineering (ECE)

B.Tech ECE
B.Tech ECE (Hons) – AI & ML

Lateral Entry Options:

- B.Tech ECE – Lateral Entry
- B.Tech ECE (Hons) – AI & ML – Lateral Entry

Electrical Engineering

B.Tech Electrical Engineering
B.Tech Electrical Engg. + Minor in AI & ML

Lateral Entry Options:

- B.Tech Electrical Engg. – Lateral Entry
- B.Tech Electrical Engg. + Minor in AI & ML – Lateral Entry

Computer Science & Engineering

B.Tech CSE
B.Tech CSE (Hons) – Cyber Security
B.Tech CSE (Hons) – AI & ML
B.Tech CSE Blockchain Technology
B.Tech CSE (Full Stack Development)
B.Tech CSE (Hons) – Data Science

Lateral Entry

- B.Tech CSE – Lateral Entry
- B.Tech CSE (Hons) – Cyber Security – Lateral Entry
- B.Tech CSE (Hons) – AI & ML – Lateral Entry
- B.Tech CSE (Block Chain Technology) – Lateral Entry
- B.Tech CSE – Full Stack Development – Lateral Entry
- B.Tech CSE (Hons) – Data Science – Lateral Entry

Civil Engineering

B.Tech Civil Engineering
B.Tech Civil Engg. + Minor in AI & ML

Lateral Entry Options:

- B.Tech Civil Engg. – Lateral Entry
- B.Tech Civil Engg. + Minor in AI & ML – Lateral Entry

Enroll Now to Lead the AI Revolution!



PLACEMENT & CORPORATE READINESS CELL (PCRC)

- Highest Package: Rs. 40 LPA
- Internships & Training Partners: Collaborations with leading companies like IBM, Tech-M, Infosys & Nasscom etc.
- Workshops & Training: Soft skills, aptitude, technical training & Personality Development.
- Career Guidance: Individual career mapping and expert counseling.
- Industry Connect: Internships, Capstone Projects, Expert Talks and corporate visits.
- Placement Programs: Corporate Readiness Training Programme (CRTP), Employability Enhancement Programme (EEP), for placement readiness.



FINANCIAL AID & SCHOLARSHIPS

MERIT-BASED SCHOLARSHIPS:

Offer scholarships based on academic performance, JEE scores, or extracurricular achievements.

EARLY BIRD SCHOLARSHIPS:

Provide fee waivers for students who confirm admission within a specific timeline.

FLEXIBLE PAYMENT PLANS:

Allow students to pay fees in installments to reduce financial barriers.



UPTO **100% SCHOLARSHIP**

RIMT UNIVERSITY

✉ admission@rimt.ac.in  /rimt.ac.in  /rimt_university

1800 137 0022

 **9781297547**

NH 1 Delhi-Jalandhar Highway Sirhind Side, Mandi Gobindgarh Punjab-147301, INDIA